

Secondary 3 NA

Meet-the-Parents Session

5th Feb 2018



School Administration



Attire Expectations

- For students having PE on Mon, Wed and Thurs:
 - To **change back into full uniform** during next break (recess or lunch)
 - **Girls** to **tuck in** their T-shirts
 - **Boys** may **tuck in or hang out** their T-shirts



Attendance Taking

- Reporting Time: **7.25am**
- Parents will receive an SMS from school at **9.30am** if your child is absent



Punctuality

No. of times late	Action(s) Taken
1	Verbal Warning
2	Verbal Warning
3	Restitution (required to report to school at 715am the next <u>two</u> days) + parents informed
4	Restitution (required to report to school at 715am the next <u>four</u> days)
5	After-School Detention (2 hrs)



Punctuality

No. of times late	Action(s) Taken
6	After-School Detention (2 hrs) + parent informed
7	After-School Detention (2 hrs) + 'Fair' conduct
8	After-School Detention (2 hrs) + 'Poor' conduct + Meeting with Parent
> 09	School's discretion, including suspension from lessons/school



Assessment



Assessment Components

Refer to [**cwssdocs.org**](http://cwssdocs.org)

click **"more..."**

under **"Course Outlines"**

> Secondary Three Course Outlines



Promotion Criteria (3NA)

A pass in **English Language** and **two other subjects**



Post-Secondary Options



For N'Level Students:

DPP:

Direct Entry Scheme to Polytechnic Programme

- visit <http://www.ite.edu.sg/wps/portal/definitely-des/> for more information on DPP

PFP:

Polytechnic Foundation Programme

- visit <http://www.polytechnic.edu.sg/pfp/> for more information on PFP



University

JC

NAFA
La Salle

Poly

Poly

NAFA
La Salle

S5

PFP / DPP

ITE

4NA

DPP

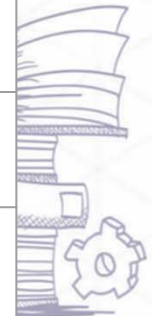
A **through-train pathway** to prepare students for progression into selected polytechnic diploma courses **via a two-year Higher Nitec programme at the Institute of Technical Education (ITE).**



DPP Eligibility

- Obtained **ELMAB3** (English Language, Mathematics and 3 other subjects) aggregate of **19 points or lower** (before deducting CCA bonus points) **AND met course-specific entry requirements.**
- “O” level subjects can be used for computation of ELMAB3 aggregate

GCE “O” level	Converted Grade
A1 - B3	1
B4 - C6	2
D7 - E8	3



PFP

A **through-train pathway** to prepare students for progression into **selected polytechnic diploma courses**



PFP Eligibility

- Obtain ELMAB3 (English, Mathematics, Best 3 Subjects) aggregate of **11 points or lower** (before deduction of CCA bonus points) **AND meet subject-specific requirements.**
- “O” level subjects taken in 2017 can be used for computation of ELMAB3 aggregate
- **EL min. Grade 2** for some courses, e.g. accountancy and business administration

GCE “O” level	Converted Grade
A1 - B3	1
B4 - C6	2
D7	3

Other Events:

1. Sec 3NA OBS (5 - 9 Mar)

1. Parents-Teacher Meeting

- End of Term 2



ONE SCHOOL, ENDLESS POSSIBILITIES



THANK YOU!



commonwealthsec.moe.edu.sg



Commonwealth Secondary School



@CWSSsg



@CWSSsg

